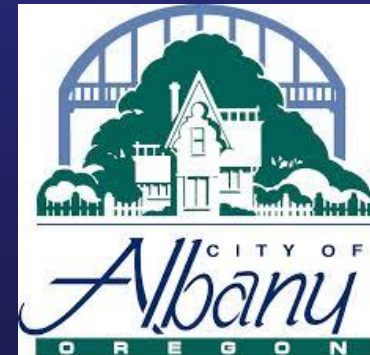
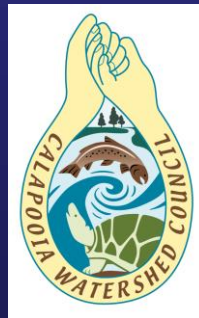


Willamette Stewardship Team- Albany Reach

“WSTAR”

*Tara Davis, Executive Director
Calapooia Watershed Council*



Meyer Memorial Trust



**greenbelt
land trust**

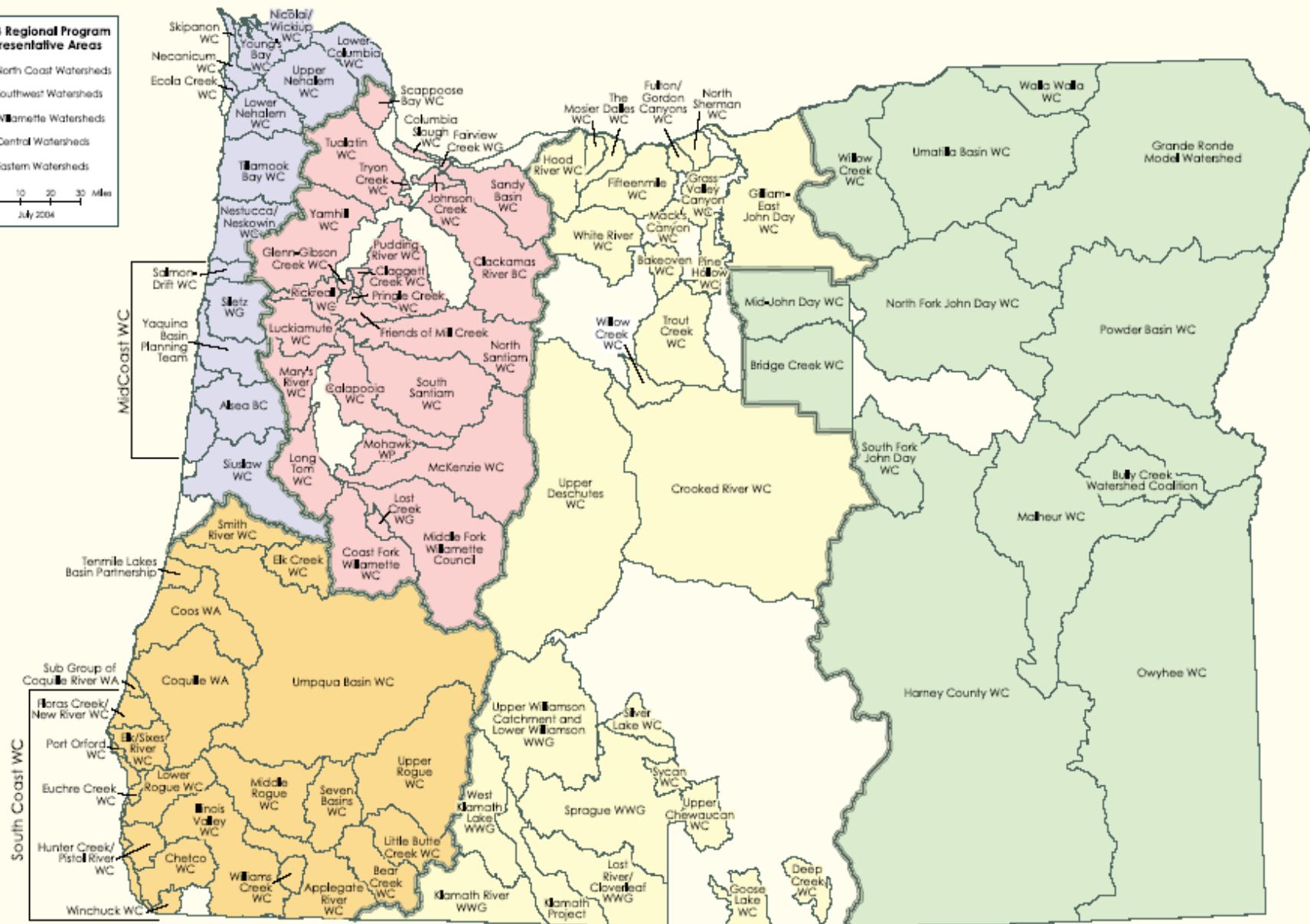
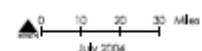
What is a watershed Council?

- Locally organized, voluntary, non-regulatory groups. Usually grant funded.
- Designated by a local government group (in our case, Linn and Benton Counties)
- Typically use consensus decision making
- Required to represent a balance of interested and affected persons within the watershed

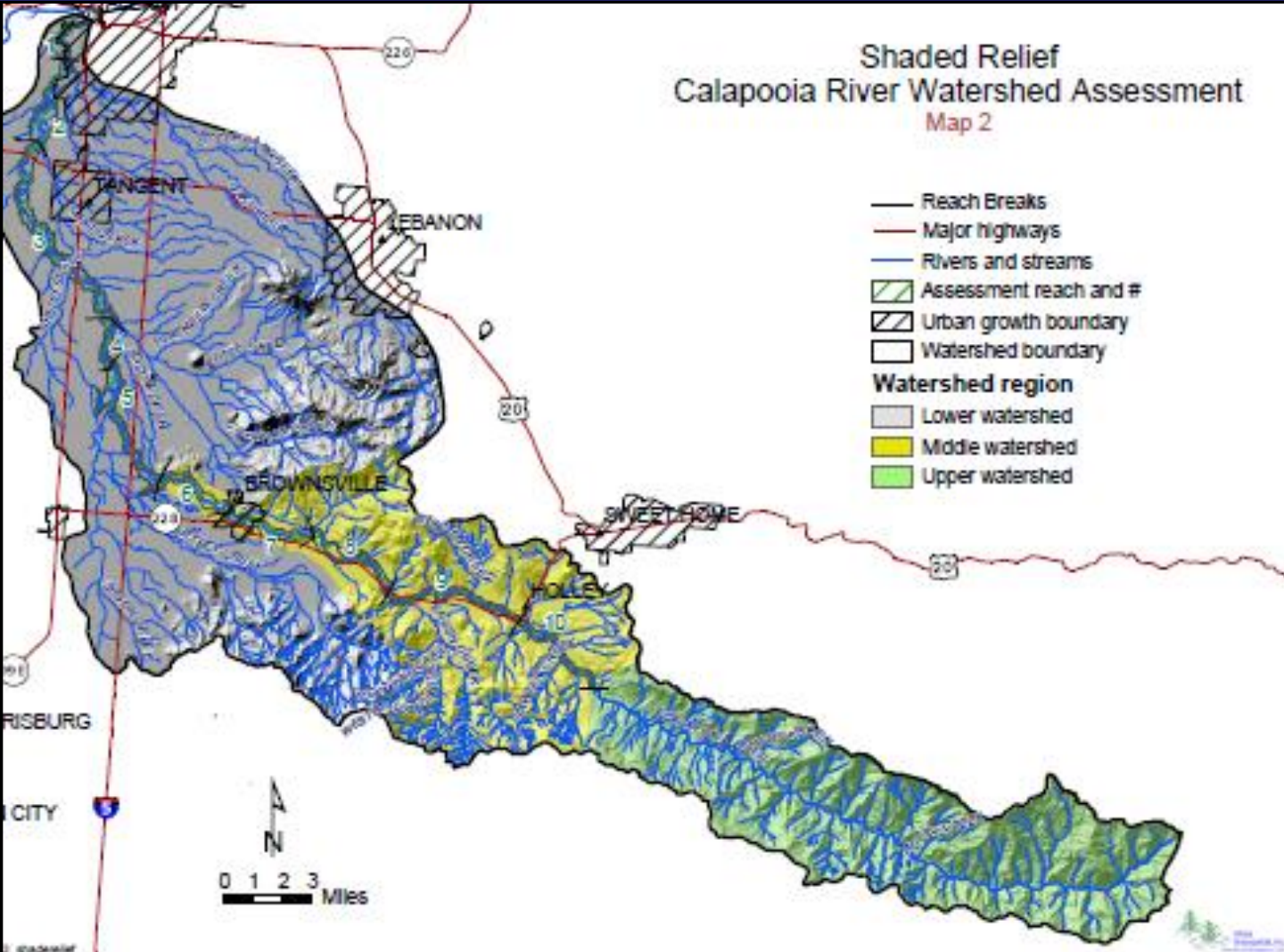
Oregon Watershed Councils

OWEB Regional Program Representative Areas

-  North Coast Watersheds
-  Southwest Watersheds
-  Willamette Watersheds
-  Central Watersheds
-  Eastern Watersheds



Shaded Relief Calapooia River Watershed Assessment Map 2



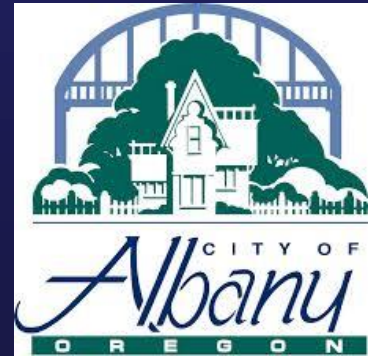
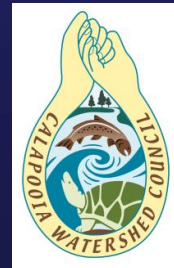
Winter 2010- Opportunity!

“WILLAMETTE BASIN INITIATIVE”

Albany Public Works

Greenbelt Land Trust

Calapooia Watershed Council



Meyer Memorial Trust

Today's WSTAR

City of Albany

Calapooia Watershed Council

Greenbelt Land Trust

Friends of ETLNA

Oregon Department of Fish and Wildlife

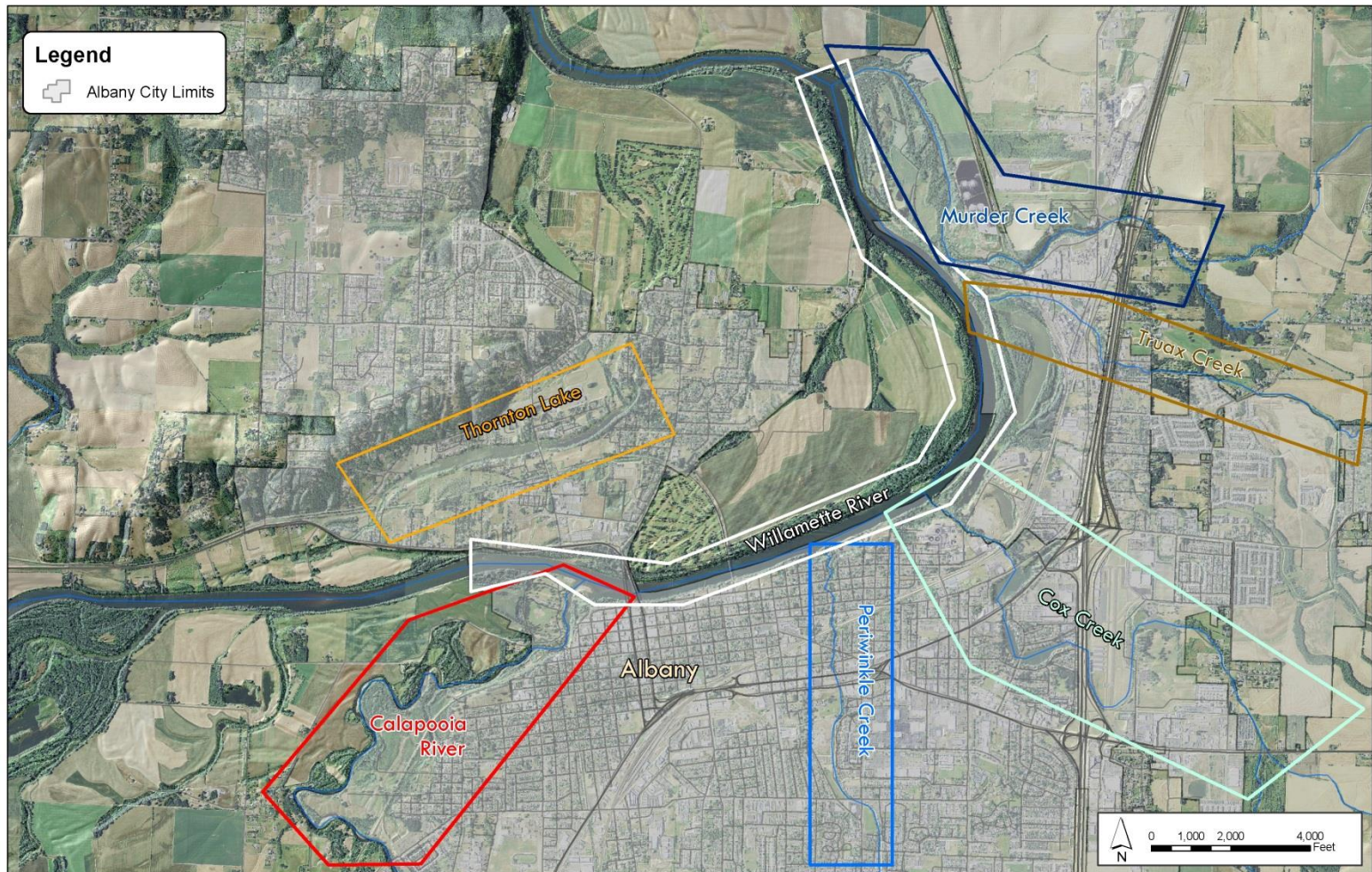
Private Landowners

Benton Soil & Water Conservation District

ATI Wah Chang

Spring 2010 Assessment Funding

City of Albany and MMT, Project ID/Priorities



Summer-Fall 2010- Field Work and Meetings!

Stakeholder and Survey Team Participants:

Albany Staff

CWC Staff

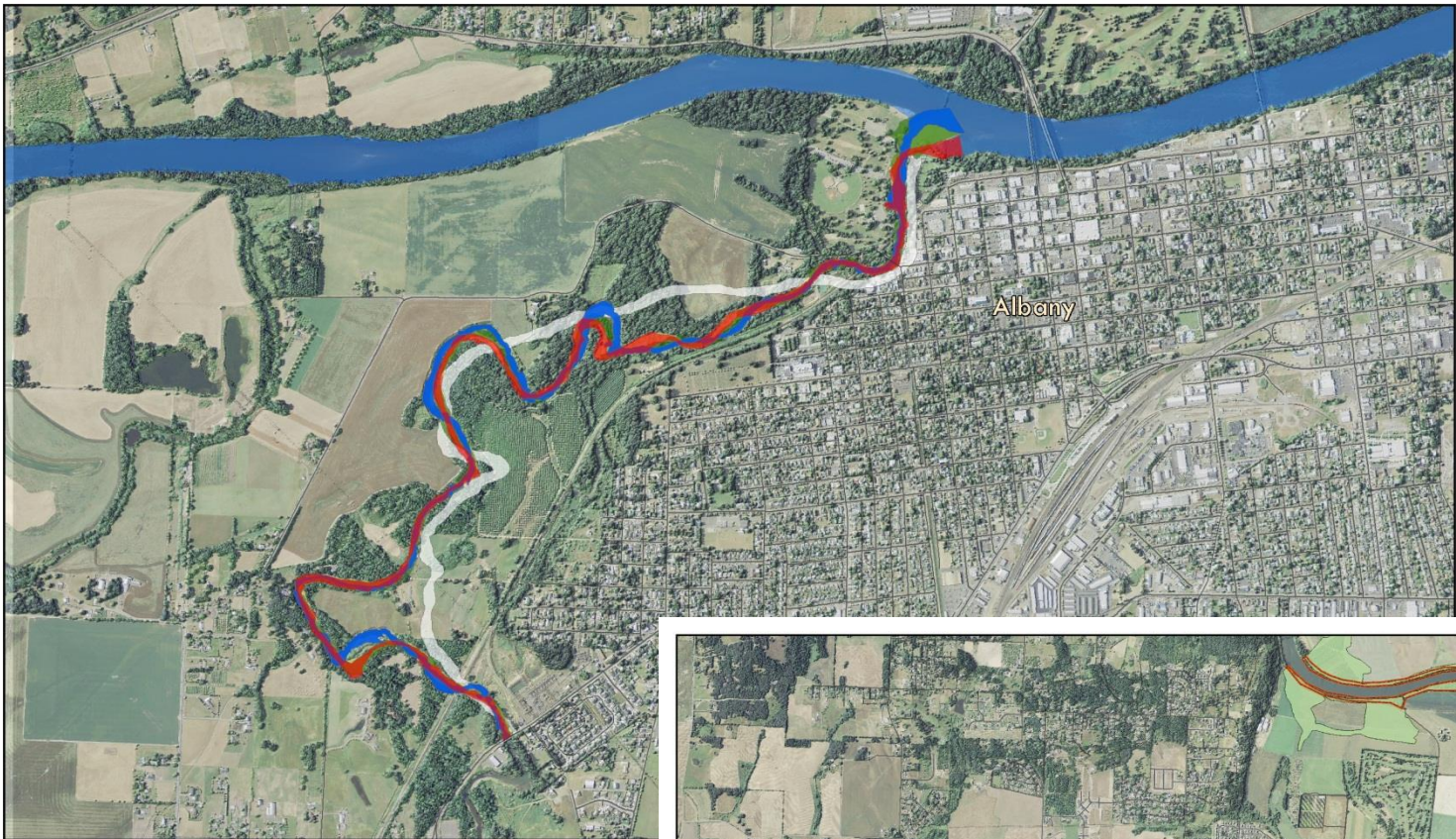
Greenbelt Land Trust

Friends of ETLNA

ODFW

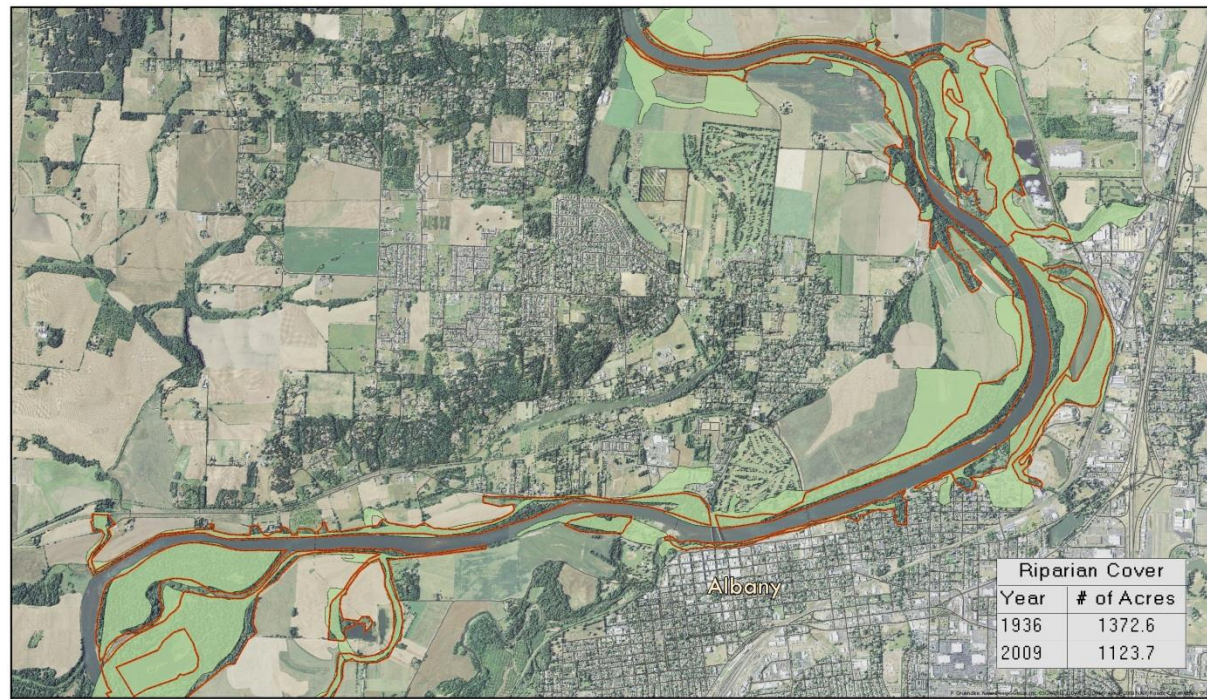
Private Landowners





Historical Channel Analysis
Calapooia River near Albany, Oregon

Legend



Riparian Cover
Willamette River near Albany, Oregon

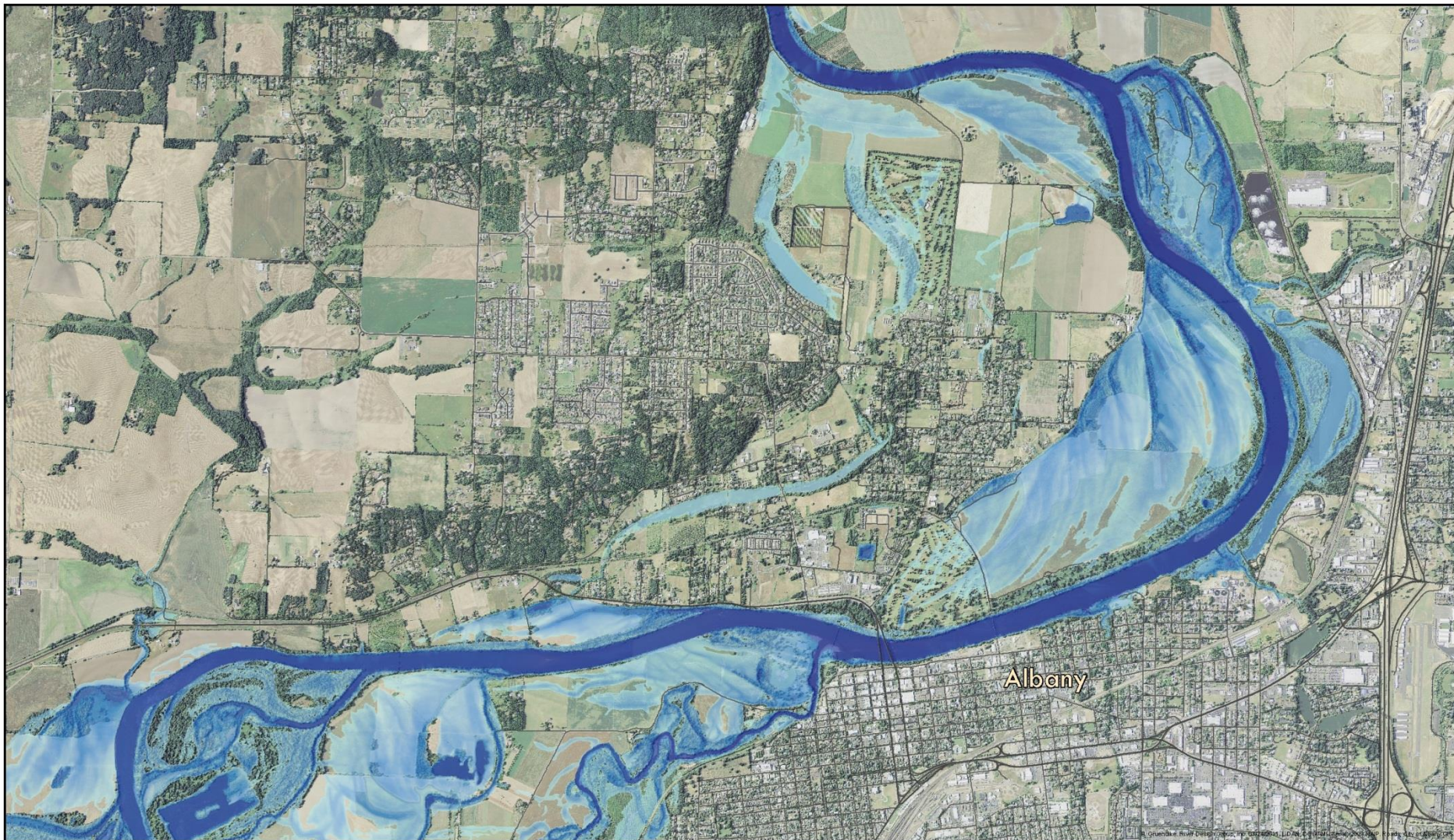
Legend



0 0.25 0.5 1 Miles



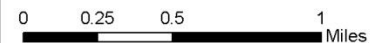
Riparian Cover	
Year	# of Acres
1936	1372.6
2009	1123.7



Depth at 69,500 cfs
Willamette River near Albany, Oregon

Legend

— Roads



Calapooia River - Albany Assessment and Project Implementation Plan

Final Report



Site Assessment on the Willamette River.

Submitted To:

Ms. Tara Davis, Executive Director
Calapooia Watershed Council
PO Box 844
Brownsville, Oregon 97327



Submitted By:

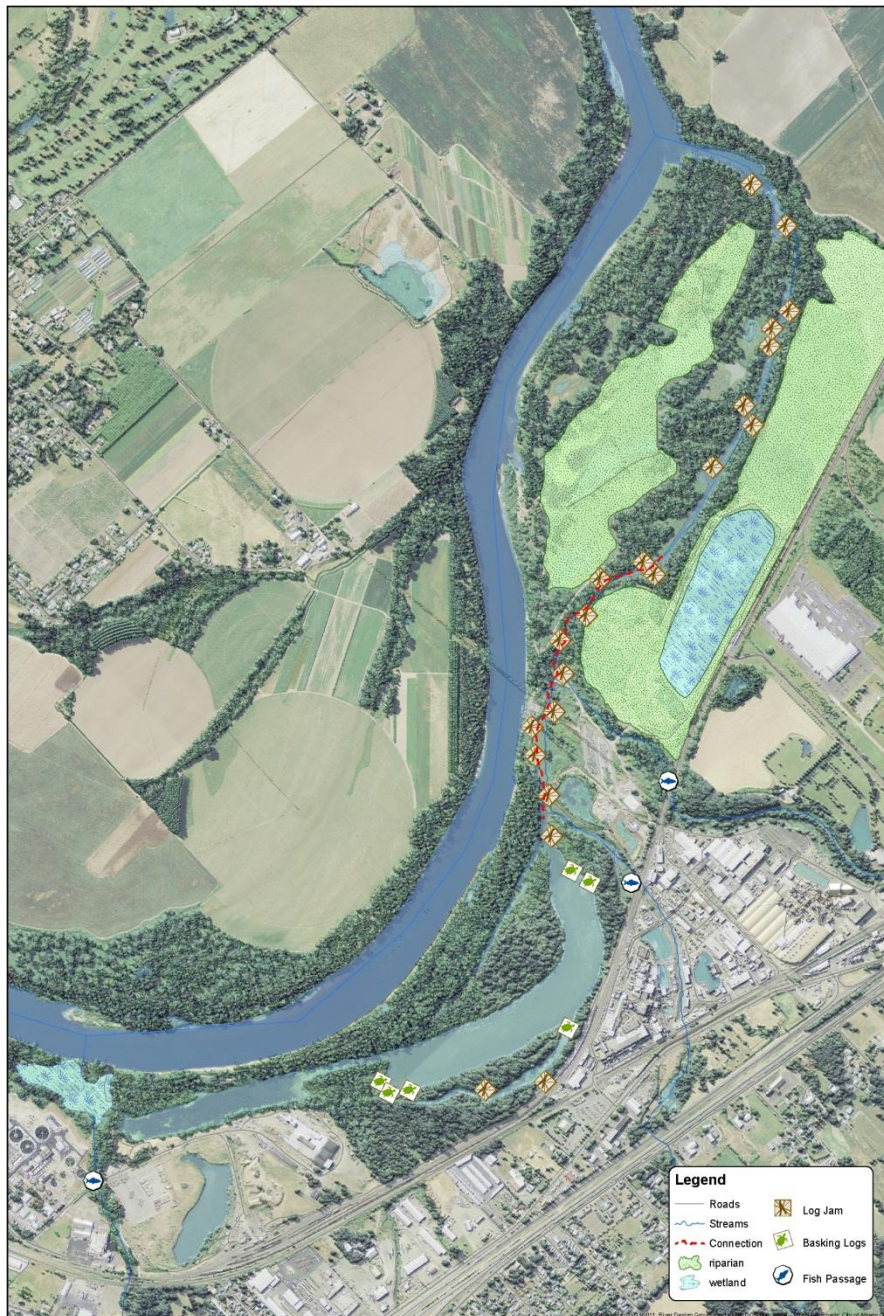
River Design Group, Inc.
311 SW Jefferson Avenue
Corvallis, Oregon 97333



April 29, 2011

April 2011

- Citizen **engagement and education.**
- Enhances **City capacity to restore and maintain** their 900 acres of public/park property.
- Address and satisfy **regulatory requirements** like TMDL.
- Take full advantage of **ecological services** Albany's properties can provide to greater Willamette system with enhancement.

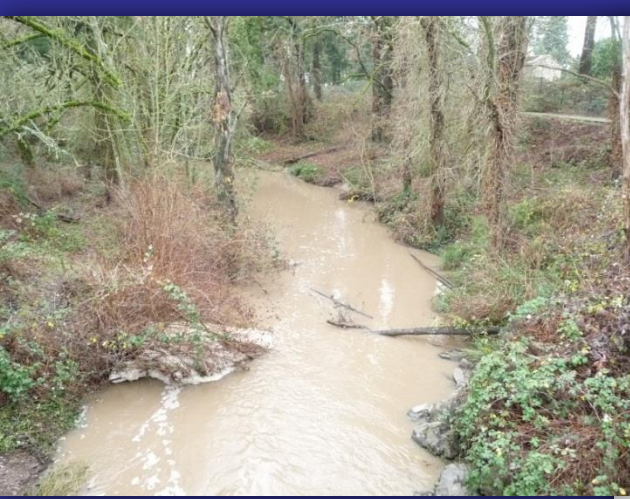


Proposed Treatments Map
Albany Oxbows, Albany, Oregon



0 300 600 1,200
Feet





Proposed Treatments Map
Albany Oxbows, Albany, Oregon

Vegetation Management

- 11 acres of intensive vegetation control, 9 of which require intense reed canary suppression
 - 2500 stems/acre
- 5 acres of standard riparian vegetation control
 - 1000-1500 stems/acre
- Two additional sources of mitigation dollars to support all 16 acres of site preparation, planting and maintenance
- Educational and demonstrative components such as signage along trails and high traffic areas, and public tours with City of Albany

Cox Creek Revegetation (32.8 acres)



200 100 0 200 Feet



Site Prep & Maintenance

-Site Prep: 11 acres of intensive vegetation control, 9 of which require intense reed canary suppression

- Flail mow
- Spray
- ATV boom spray and fringe “mop up”

-Site Prep: 5 acres of standard riparian vegetation control

- Mow, spray, hand pull ivy and blackberry

-City of Albany

- Flail mowing upon request
- Watering (all acreage)
- Potential future chemical maintenance years 4 & 5
- Frequent visual appraisal of site conditions and maintenance needs

-CWC and Contractor of Record

- Push mower between rows (5' spacing)
- PM responsibilities (monitoring of survival, maintenance direction, and evaluating beaver predation)
- Spot spraying

Cox Creek Revegetation (32.8 acres)



200 100 0 200 Feet



Planting Bare Root Stock from BEF Contract Grow

Proposed Work Areas	Area (ac)	Plants (no.)	Initial Plant Cost	Inter-Plant Plant Cost	Approximate Spacing
Confluence Intensive Reveg	11.5	28,700	\$15,785.00	\$3,946.25	4' x 4'
Confluence Light Reveg	16.0	16,000	\$8,800.00	\$2,200.00	4'x 4' + varies with existing vegetation
Upper Cox Reveg	5.3	10,680	\$5,874.00	\$1,468.50	4'x 4' + varies with existing vegetation
Total	32.8	55,380	\$30,459.00	\$7,614.75	

Preliminary Species List and Distribution

Species Name	Common Name	Confluence Intensive Reveg	Confluence Light Reveg	Upper Cox Reveg	
Acer circinatum	Vine Maple		400	400	
Acer macrophyllum	Bigleaf Maple		200	200	
Alnus rubra	Red Alder		300	500	
Amelanchier alnifolia	Serviceberry		500	100	
Cornus sericea	Red Osier Dogwood		500	1000	
Corylus comuta	Hazelnut		500	100	
Fraxinus latifolia	Oregon Ash	100	400	100	
Mahonia aquifolium	Tall Oregon Grape	300	500	500	
Malus fusca	Western Crabapple	100	100	200	
Oemleria cerasiformis	Indian Plum		400	600	
Physocarpus capitatus	Ninebark	800	2000	1000	
Populus trichocarpa	Black Cottonwood	200	300		
Prunus emarginata	Bitter cherry		200	200	
Psuedotsuga menziesii	Douglas Fir		100	100	
Quercus garryana	Oregon Oak		50	50	
Rhamnus purshiana	Cascara	100	400	100	
Rosa pisocarpa	Swamp Rose	2000	1500	500	
Rubus parviflorus	Thimbleberry	800	1200	1600	
Sambucus racemosa	Red Elderberry	800	2000	1200	
Spiraea douglasii	Spiraea	15000			
Symphoricarpos albus	Snowberry	8000	4000	3000	
Subtotal		28200	15550	11450	55200

Cox Creek Revegetation (32.8 acres)



200 100 0 200 Feet













LEVERAGING Partner \$\$

Albany \$10,000 in 2010



MMT Grant- Assessment

MMT Grant- Design

State Restoration Grant

BPA Mitigation \$ for Cox Planting

State WQ Monitoring Grant-TMDL

Private Donation- Youth Watershed Education

Over \$400,000 Leveraged

(3.5 years, 5/10-10/13)

Outcomes 2011-2013

- **2 workshops** with Thornton Lakes residents: Lake Management and Invasive Species.
- **Block captains** spreading educational information around Thornton Lake.
- **16 acres of noxious weed control** and native plantings at Cox Creek-Simpson Park.
- **Willamette River floodplain invasive species inventory** and habitat quality evaluation from Corvallis to Albany.
- **1 dam removal** in prime Willamette off-channel habitat
- **Multiple “native planting plans”** or prescriptions for lower Calapooia River and Cox Creek.
- **Environmental education** program in Albany schools with 2013 pilots in Central Albany, North Albany and Oak Grove. Also working with Timber Ridge and Linn-Benton Youth Detention Center.
- **Water quality monitoring** in several Albany stream to address TMDL regulation.

2014 Anticipated Outcomes

- Pilot **environmental education program expanded** beyond 3 schools to several elementary schools; high school partnerships.





2014 Anticipated Outcomes

- Pilot **environmental education program expanded** beyond 3 schools to several elementary schools; high school partnerships
- **Calapooia confluence** and Willamette mainstem floodplain habitat enhancement planning and demonstration.





Willamette Rv

BRYANT

City of Albany

ST GEORGE

HOP
16TH
15TH
14TH
13TH
12TH
11TH
10TH
9TH
8TH
7TH
GALE
LINCOLN
BROADWAY

LIBERTY
LAWNRIDGE

15TH
14TH
13TH
12TH
11TH
10TH
9TH
8TH
7TH
6TH
5TH
4TH
3TH
2TH
1ST

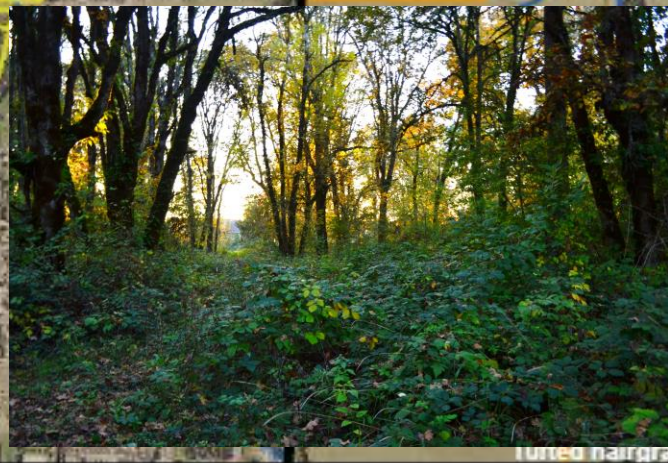
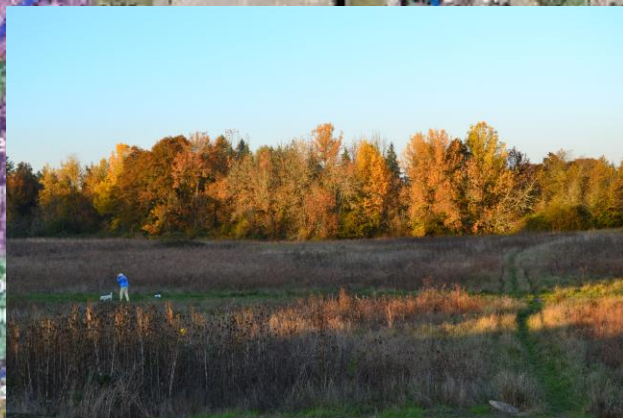
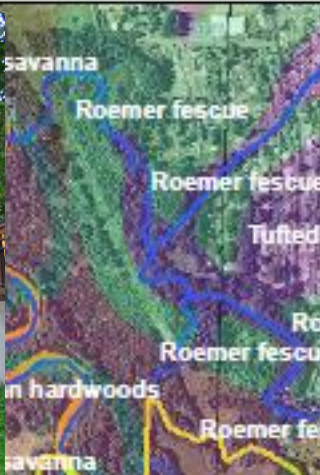
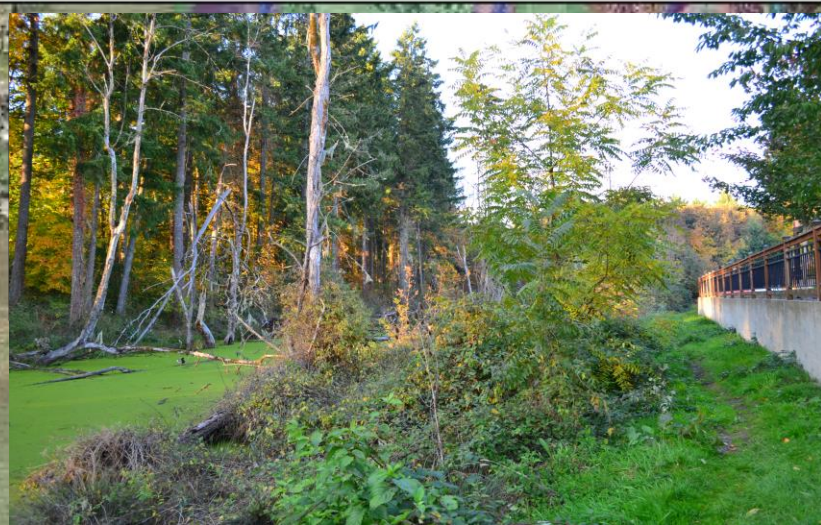
UMATILLA

15TH
14TH
13TH
12TH
11TH
10TH
9TH
8TH
7TH
6TH
5TH
4TH
3TH
2TH
1ST

2014 Anticipated Outcomes

- **Pilot environmental education program expanded** beyond 3 schools to several elementary schools; high school partnerships
- **Calapooia confluence** and Willamette mainstem floodplain habitat enhancement planning and demonstration.
- **Oak Creek Open Space** grant writing for a restoration and management plan for 233 acre ecological gem.







Albany

**Thank You Albany Staff & Council!!
Please Visit our Website for More!**

www.calapooia.org